



Best Viewed in
Landscape Mode

Metal Flasks, Sippers & Mugs

Contains: Vacuum Flasks, Metal bottles, and Mugs



Capacity 1 Ltr. approx.

COLA 1000 ML.

VACUUM FLASK IN COLOR FINISH



INSIDE
& OUTSIDE



DOUBLE
WALL



BPA
FREE



LEAK
PROOF



FOOD GRADE

Vacuum Flask made of 304 grade steel both inside and outside

Fully insulated, double walled and vacuumized for better temperature retention

Compact and portable, fits perfectly in hand or bag

Capacity : 1000 ml. (approx)



Product Code : H 311



HOT & COLD
18-24 HOURS



CAPACITY
1000 ml
APPROX.

COLA 1000 ML. VACUUM FLASK IN STEEL FINISH

CAPACITY
1000ml
APPROX.



Product Code : H 310

Capacity 1 Ltr. approx.



INSIDE
& OUTSIDE



DOUBLE
WALL



BPA
FREE



LEAK
PROOF



FOOD GRADE



HOT & COLD
18-24 HOURS



- Vacuum Flask made of 304 grade steel both inside and outside
- Fully insulated, double walled and vacuumized for better temperature retention
- Compact and portable, fits perfectly in hand or bag
- Capacity : 1000 ml. (approx)

Capacity 500ml. approx.



COLA 500 ML.

VACUUM FLASK IN COLOR FINISH

Product Code : H 309

- Vacuum Flask made of 304 grade steel both inside and outside
- Fully insulated, double walled and vacuumized for better temperature retention
- Compact and portable, fits perfectly in hand or bag
- Capacity : 500 ml. (approx)



**HOT & COLD
18-24 HOURS**



**INSIDE
& OUTSIDE**



**DOUBLE
WALL**



**BPA
FREE**



**LEAK
PROOF**



FOOD GRADE



Capacity
500ml. approx.

COLA 500 ML.

VACUUM FLASK IN STEEL FINISH

Product Code : H 308

- Vacuum Flask made of 304 grade steel both inside and outside
- Fully insulated, double walled and vacuumized for better temperature retention
- Compact and portable, fits perfectly in hand or bag
- Capacity : 500 ml. (approx)



**HOT & COLD
18-24 HOURS**



**INSIDE
& OUTSIDE**



**DOUBLE
WALL**



**BPA
FREE**



**LEAK
PROOF**



FOOD GRADE

Capacity : 500 ml. approx.



FLIP TOP CAP WITH EASY CARRY SLOT

INSULATED STRAIGHT STEEL BOTTLE

WITH RICE HUSK OUTER BODY

- Stainless steel bottle with rice husk outer body
- Works like a flask, keeps your drink hot / cold for upto 4 hours
- Durable & Light Weight
- BPA Free, made from Stainless steel inside
- Makes the bottle stay fresh with no odors
- Slot for carrying easily
- Leakproof, Flip top cap to drink easily



KEEPS
HOT/COLD
FOR
4-5 HOURS



Product Code
H 224A



LEAK
PROOF



LIGHT
WEIGHT



WIDE
MOUTH



BPA
FREE



Designed to fit easily in car cup holders

LONG COLA COLORED

750 ML. STAINLESS STEEL BOTTLE

Product Code : H 307



Capacity : 750 ml approx.



WIDE
MOUTH



LEAK
PROOF



LIGHT
WEIGHT



BPA
FREE



CAPACITY
750ml
APPROX.

STAINLESS STEEL



LONG COLA

750 ML. STAINLESS STEEL BOTTLE

Product Code : H 306

- Single wall Stainless steel bottle
- Attractive shape
- Color: Silver

Capacity : 750 ml approx.

Carry strap



**LEAK
PROOF**



**LIGHT
WEIGHT**



**WIDE
MOUTH**



**BPA
FREE**

Packing
in
Brown
Box





Capacity: 400 ml (approx)

BAMBOO VACUUM FLASK

WITH TEA STRAINER

Product Code : H 191 A



INSIDE WITH
NATURAL
BAMBOO OUTSIDE



Hot / Cold



BPA
FREE



LEAK
PROOF

Tea strainer allows for
both hot and cold
detox tea brews



POWER PLUS



CAFÉ MATE PRO

STAINLESS STEEL VACUUM COFFEE MUG
WITH TEMPERATURE DISPLAY



HOT & COLD
6-8 HOURS

PREMIUM FLIP TOP
LOCKING CAP

DOUBLE WALL PROTECTS YOUR
HANDS FROM BURNING BY
HOT LIQUIDS INSIDE

COMES WITH A CAP
TO STORE YOUR DRINK FOR LATER

DOUBLE WALL MUG MADE OF
STAINLESS STEEL INSIDE

Capacity 510 ml. approx



DOUBLE
WALL



BPA
FREE



LEAK
PROOF

304 GRADE

STAINLESS STEEL inside

Product Code : H 278

POWER PLUS

CAFÉ MATE

STAINLESS STEEL

VACUUM COFFEE MUG

Double wall protects your hands from burning by hot liquids inside

Double wall mug made of stainless steel inside



Capacity 380 ml. approx



Product Code : H 276



Elegant design,
made of
100%
stainless steel

Slim construction to
fit inside car holders easily



LEAK
PROOF



BPA
FREE



DOUBLE
WALL



304
STEEL



HOT & COLD
6-8 HOURS



PREMIUM FLIP TOP LOCKING CAP

304 GRADE
STAINLESS STEEL

POWER PLUS

Capacity 510 ml. approx

SILICON GRIP

CAFÉ BUDDY

STAINLESS STEEL

VACUUM COFFEE MUG

Elegant design,
made of
100%
stainless steel

Double wall protects your
hands from burning by hot liquids inside

Double wall mug made of
stainless steel inside



304 GRADE
STAINLESS STEEL inside

2
DOUBLE
WALL



**BPA
FREE**



**LEAK
PROOF**



**HOT & COLD
6-8 HOURS**

Product Code
H 274



ECO VAULT 700 VACUUM FLASK WITH BAMBOO LID

Product Code : H 305

Capacity : 700ml. approx.



- Vacuum Flask made of 304 grade steel both inside and outside
- Eco Vault 700 - vacuum flask comes with finger slot
- Fully insulated, double walled and Vacuumized for better temperature retention
- Matte black finish body for premium looks



**HOT & COLD
18-24 HOURS**



**INSIDE
& OUTSIDE**



**DOUBLE
WALL**



**BPA
FREE**



**LEAK
PROOF**



FOOD  **TO PLAY VIDEO**

Capacity 900ml. approx.



HEAT VAULT SIP VACUUM FLASK WITH STRAW LID

Product Code : H 304

- Vacuum Flask made of 304 grade steel both inside and outside
- *Heat Vault - Sip* vacuum flask comes with finger slot
- The straw is made of soft PP material to ensure durability
- Fully insulated, double walled and vacuumized for better temperature retention
- Matte black finish body for premium looks



**HOT & COLD
18-24 HOURS**



Straw Lid



INSIDE
& OUTSIDE



**DOUBLE
WALL**



**BPA
FREE**



**LEAK
PROOF**



FOOD GRADE



Capacity 900ml. approx.

HEAT VAULT INFUSE

VACUUM FLASK WITH INFUSER LID



- Vacuum Flask made of 304 grade steel both inside and outside
- *Heat Vault - Infuse* vacuum flask comes with finger slot
- Fully insulated, double walled and Vacuumized for better temperature retention
- Fully insulated, Vacuumized flask keeps your beverages hot / cold for 18 to 24 hours!
- Matte black finish body looks premium



**HOT & COLD
18-24 HOURS**



INFUSER
LID

Product Code : H 303



INSIDE
& OUTSIDE



DOUBLE
WALL



BPA
FREE



LEAK
PROOF



FOOD GRADE

NOBLE MID SIZE

STAINLESS STEEL DOUBLE WALL COFFEE MUG

DOUBLE WALL COFFEE MUG WITH POINTY HANDLE



Capacity
250 ml approx.

Product Code : H 302



- High quality stainless steel double wall mug
- Double wall protects your hands from burning by hot liquids inside
- Mug's double wall also prevents cold liquids' temperature increase by body heat
- Comes with a cap to store your drink for later



DOUBLE
WALL



BPA
FREE



LEAK
PROOF



ANTI
RUST



STAINLESS
STEEL INSIDE



**Mirror finish
stainless steel
inside for
longer life**

Elegant design, made of
100% stainless steel inside

POWER **PLUS**

Dura **MUG**

SPILL PROOF SUCTION MUG
WITH OVAL HANDLE



**DOUBLE
WALL**



**BPA
FREE**



**LEAK
PROOF**



**STAINLESS
STEEL
INSIDE**



Elegant design,
made of
**100%
Stainless
Steel
inside**

STAINLESS STEEL inside



Magic suction feature
ensures spill free design



Spill-proof
suction
mechanism
to prevent
accidental
spills

Product Code :
H 301

CLICK HERE



TO PLAY VIDEO

POWER PLUS

Ceramix

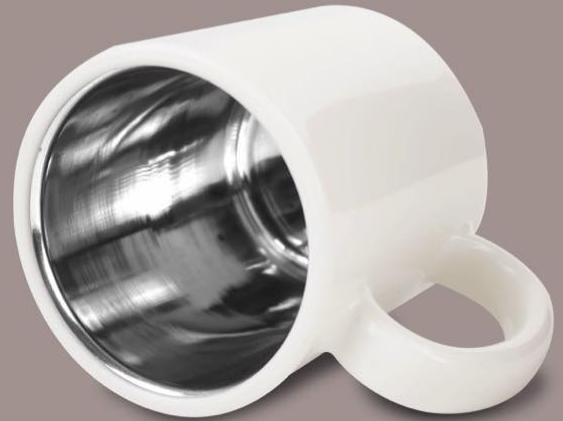
CERAMIC LOOK MUG

WITH STAINLESS STEEL INSIDE

Product Code : H 300



Capacity :
300 ml (approx)



STAINLESS STEEL inside

2

**DOUBLE
WALL**



**BPA
FREE**



**LEAK
PROOF**



**ANTI
RUST**



Candy

INSULATED STEEL BOTTLE

WITH FLIP TOP LID
IN MATTE FINISH



Bottle has
silicon strap
to hold and
carry easily

POWER PLUS

- Stainless steel bottle with PU Insulated matte finish outer body
- Bottle has silicon strap to hold and carry easily
- Bottle keeps liquid hot / cold for 4-6 hours

STAINLESS STEEL inside

Product Code : H 248 A



**HOT & COLD
4-6 HOURS**



**AMAZINGLY
LIGHT WEIGHT**



**SPILL &
LEAK PROOF**

Capacity 750 ml. approx.

SUNSET ECO

BAMBOO FIBER ECO FRIENDLY MUG

WITH STAINLESS STEEL INSIDE



Product Code : H 289



Made with a premium blend of bamboo fiber and stainless steel

Double wall protects your hands from burning by hot liquids inside

Capacity :
360 ml (approx.)



ECO FRIENDLY



FOOD SAFE



LAB TESTED QUALITY



RESPONSIBLY SOURCED



100% RECYCLABLE



BPA FREE

Comes with an air tight cap to store your drink for later



Eco-friendly, durable, and long-lasting

STAINLESS STEEL inside

BULLET VACUUM FLASK

Product Code : H 299

- Beautiful bullet vacuum flask
Double wall stainless steel vacuum insulation with food grade 304 stainless steel inside
- Rinse with hot/cold water before filling with hot/cold liquids for increased temperature retention
- Lid acts as a handy cup while travelling



HOT & COLD
08-10 HOURS



Capacity:
500ml (approx)



ECO BREW MUG WITH LID

COFFEE FIBER ECO FRIENDLY MUG WITH BAMBOO LID



capacity : 300 ml approx



Product Code : H 288 A



Unbreakable



Upcycled



Low CO₂
footprint



Uplift farmer



Crop-waste
used



Microwave Safe



- Beautiful mugs made of Eco friendly Coffee fiber with bamboo lid
- Sustainable and responsible choice as lesser plastic gets dumped in landfills
- Classic design looks like a ceramic mug
- BPA free, food safe material used

CLARKE VACUUM FLASK

- Premium quality flask made of 304 grade stainless steel inside as well as outside
- Fully insulated, Vacuumized flask keeps your beverages hot / cold for 18 to 24 hours!
- Attached lid stays connected to flask when opened
- Wide mouth to fit ice cubes easily

Capacity : 1L Approx



304 STEEL
INSIDE
& OUTSIDE



HOT
& COLD
18-24 HOURS



VACUUM
TRIPLE
INSULATED



OUTER
STAINLESS WALL

MIDDLE
COPPER
LAYER

INNER
STAINLESS
STEEL WALL



Product Code : H 298

POWER PLUS



ASTRO 1000

VACUUM FLASK

COPPER LAYER INSIDE

POWER **PLUS**



HOT & COLD
18-24
HOURS



VACUUM
TRIPLE
INSULATED

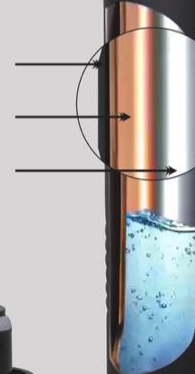


304 STEEL
INSIDE
& OUTSIDE

Outer Stainless
Steel Wall

Middle Copper
Layer

Inner Stainless
Steel Wall



Product Code : H 297



Available in 2 colors: Gray & Black

Astro 500 Vacuum Flask

COPPER LAYER INSIDE



HOT & COLD
18-24
HOURS

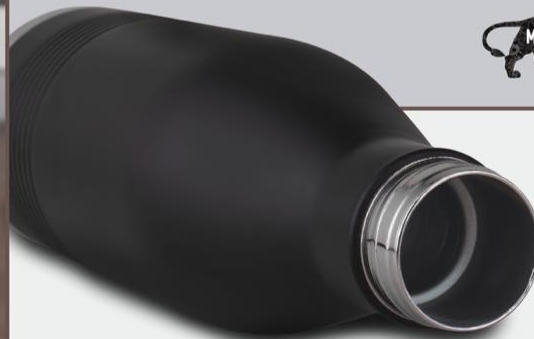


VACUUM
TRIPLE
INSULATED

Outer Stainless
Steel Wall

Middle Copper
Layer

Inner Stainless
Steel Wall



304 STEEL
INSIDE
& OUTSIDE

Capacity: 500ml Approx

Product Code : H 296

POWER PLUS

POWER PLUS



**304 STEEL
INSIDE
& OUTSIDE**

TALL VACUUM TUMBLER WITH FLIP TOP LID

Comes with an
flip top cap to store
your drink for later



**LEAK
PROOF**



**BPA
FREE**



**DOUBLE
WALL**

- High quality stainless steel double wall mug
- Double wall protects your hands from burning by hot liquids inside
- Fresh new design is aesthetically pleasing



**HOT & COLD
4-6 HOURS**

Product Code : H 292



ROYAL

Stainless Steel Vacuum Mug - H 207



- Exclusive Stainless Steel finish
- The Air-tight lid prevents spillage
- Beautifully designed handle for an easy grip
- Leak proof
- Double Walled
- Vacuumized
- Keeps the beverage warm for 4 to 6 hrs.
- Made from high quality materials

POWER PLUS



Inside



Leakproof



Easy Grip



Double Wall



SELF *Stirring* MUG

Capacity 380 ml. approx.

Product Code : H 264



**PRESS BUTTON & RELAX
TO SEE STIR DRINK
AUTOMATICALLY**



**LEAK
PROOF**

**POWERFUL
MOTOR TO MIX THE
DRINK FAST**

- Automatic self stirring magnetic mug to make coffee, soup, shake & protein shakes etc.
- Motor works on 2xAAA batteries (not included)
- Easy to use & save time

**USEFUL FOR MAKING
A VARIETY OF DRINKS**



Coffee



Milk



Protein Shake



**304 GRADE
STAINLESS STEEL** inside

POWER **PLUS**



Capacity **500 ml.** approx.

BAMBOO COLA VACUUM FLASK

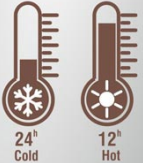
- Double wall insulated Vacuum bottle made of 304 grade stainless steel inside and outside
- Retains temperature for 12-24 hours
- Leakproof lid
- Natural bamboo on the body adds to the product appeal



DOUBLE WALL



LEAK PROOF



MADE OF **304 GRADE STEEL & BAMBOO**

Product code : H 199

Lustre

Stainless Steel Double Wall Mug - H 137

- Double wall mug made of 304 grade food-safe stainless steel inside
- Double wall protects your hands from burning by hot liquids inside
- Mug's double wall also prevents cold liquids' temperature increase by body heat
- Comes with a cap to store your drink for later with slider drinking vent protector
- Capacity: Approx 425 ml



POWER PLUS

PREMIA + GLASS MUG

WITH SILICON GRIP

SLIDER LID WITH STRAW SLOT



Silicon sleeve on body to protect your hands from burning from hot liquid inside

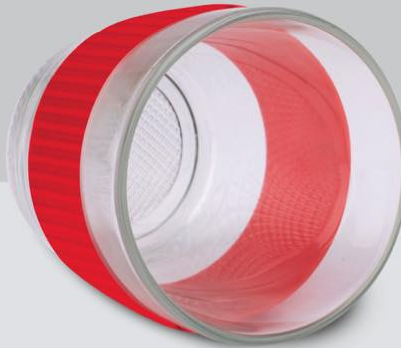
Straw slot in the lid

Slider lid for ease of use

Keeps the contents pure and free from contamination

Elegant glass mug with silicon sleeve

POWER PLUS



LEAK PROOF



BPA FREE



NON TOXIC



Product Code : H 283

Capacity: 350 ml approx.

OSCAR+

LARGE INSULATED STAINLESS STEEL
MUG WITH HANDLE



Capacity 550 ml approx.

Product Code : H 287

POWER+
+



KEEPS
HOT / COLD
FOR
3-4 HOURS



ANTI
RUST



DOUBLE
WALL



BPA
FREE



LEAK
PROOF

- Comes with a cap to store your drink for later
- Double wall protects your hands from burning by hot liquids inside
- High quality stainless steel double wall mug
- Mirror finish steel inside for longer life



STRAW
SLOT IN
THE LID

STRAW NOT INCLUDED

inside **STAINLESS STEEL**

SLIDER LID FOR EASE OF USE



Capacity **550 ml** Approx.



- Travel wide mouth Vacuum Flask with silicon strap
- Double wall stainless steel vacuum insulation
- Rinse with hot/cold water before filling with hot/cold liquid for increased temperature retention



KEEPS HOT FOR 6-7 HOURS



304 GRADE STAINLESS STEEL



WIDE MOUTH



DOUBLE WALL



BPA FREE



LEAK PROOF

Product Code : H 269

TRAVEL WIDE MOUTH VACUUM FLASK WITH SILICON STRAP

LONG COLA

STAINLESS STEEL BOTTLE

CAPACITY
900ml
APPROX.



**LEAK
PROOF**



**LIGHT
WEIGHT**



**WIDE
MOUTH**



**BPA
FREE**



Product Code : H 240 A

Ferrero

Stainless Steel Magic Coffee Mug - H 138

Spill Free Design

POWER **PLUS**®

Made of Stainless Steel both inside and outside

Easy lift up cap to protect the drinking vent

Mug doesn't fall off with accidental pushes, but can be lifted easily straight up

300 ml.

- Food-safe 304 stainless steel used inside
- Magic suction feature ensures spill free design
- Premium silicon grip on the body for a better grip and a premium feel
- Available in 2 Colours : Black and White



CLICK HERE
TO PLAY VIDEO

CAMBRIDGE

Magic Stainless steel Mug with 304 steel - H 168
(Spill free design)

Magic suction
feature ensures
spill free design



Mug doesn't fall
off with accidental
pushes, but can be
lifted easily straight
up with handle



Handle grip with
finger marks for
a better user
experience

Elegant design,
made of
food-safe 304
stainless
steel inside



Grade
304
Steel

(470 ml approx)

CLICK HERE



TO PLAY VIDEO

POWER **PLUS**

ECO BREW

COFFEE FIBER ECO FRIENDLY MUG

Product Code : H 288



Capacity :
300 ml (approx.)

- Beautiful mug made of Eco friendly Coffee fiber
- Sustainable and responsible choice as lesser plastic gets dumped in landfills
- Large capacity
- Classic design looks like a ceramic mug
- BPA free, food safe material used



Unbreakable



Upcycled



Low CO₂
footprint



Uplift farmer



Crop-waste
used



Microwave Safe



Available
color
options



SUNSET+ MUG

MAGIC SUCTION

STAINLESS STEEL INSIDE

Product Code : H 280



Capacity : 360 ml approx.



COMES WITH A LID
TO STORE YOUR
DRINK FOR LATER

POWER PLUS



**BPA
FREE**



**DOUBLE
WALL**



**LEAK
PROOF**

- High quality stainless steel double wall mug
- Mirror finish stainless steel inside for longer life



**MAGIC SUCTION
FEATURE ENSURES
SPILL FREE DESIGN**



**MUG DOESN'T FALL OFF WITH
ACCIDENTAL PUSHES, BUT CAN
BE LIFTED EASILY STRAIGHT UP**



SUNSET MUG

STAINLESS STEEL

WITH LID

Capacity 360 ml approx.



Product Code : H 279



POWER PLUS

- High quality stainless steel double wall mug
- Mirror finish stainless steel inside for longer life
- Double wall protects your hands from burning by hot liquids inside
- Comes with a lid to store your drink for later



BPA
FREE



DOUBLE
WALL



LEAK
PROOF



PLUM 550 *DOUBLE WALL* VACUUM MUG



ANTI RUST



DOUBLE WALL



BPA FREE



LEAK PROOF

Double wall protects your hands from burning by hot liquids inside

Mug's double wall also prevents cold liquids' temperature increase by body heat



Capacity
550 ml. approx.

Product Code : H 271

304 GRADE STAINLESS STEEL

PLUM 350 **DOUBLE WALL** VACUUM MUG

Product Code : H 270



Capacity
350 ml.
approx.



Mug's double wall also prevents cold liquids' temperature increase by body heat

Double wall protects your hands from burning by hot liquids inside



KEEPS HOT
FOR 4-5
HOURS



304 GRADE
STAINLESS STEEL



**ANTI
RUST**



**DOUBLE
WALL**



**LEAK
PROOF**



**304
STEEL**



**BPA
FREE**

LONG COLA

COLOR STAINLESS STEEL BOTTLE
WITH COLOR CAP AND CARRY STRAP



CAPACITY 900 ml APPROX.

STAINLESS STEEL



**LEAK
PROOF**



**WIDE
MOUTH**



**LIGHT
WEIGHT**



**BPA
FREE**

Product Code
H 241 A

STRAIGHT **STEEL VACUUM FLASK**

with Press Flow Lid



Capacity
500 ml.
approx.



- Vacuum flask with press lock cap
- Double wall stainless steel vacuum insulation with food grade 304 stainless steel inside
- Rinse with hot/cold water before filling with hot/cold liquids for increased temperature retention
- Matte black finish body looks premium



**LEAK
PROOF**



**DOUBLE
WALL**

Product Code : H 262



Hot / Cold



**304 GRADE
STAINLESS STEEL**

DELTA

STEEL VACUUM FLASK WITH FINGER SLOT

- Delta steel vacuum flask comes with finger slot
- Double wall stainless steel vacuum insulation
- Wide mouth helps add ice cube easily
- Rinse with hot/cold water before filling with hot/cold liquids for increased temperature retention
- Matte black finish body looks premium



Capacity
600 ml.
approx.

Product Code : H 263

CAPACITY **1L**
APPROX.



FLORA

STEEL BOTTLE COLORED



**LEAK
PROOF**



**LIGHT
WEIGHT**



**WIDE
MOUTH**



**BPA
FREE**



packing
in
White
Box

STAINLESS STEEL

Product Code : H - 282





CAPACITY
1L
APPROX.



FLORA

STEEL BOTTLE NATURAL



**LEAK
PROOF**



**LIGHT
WEIGHT**



**WIDE
MOUTH**



**BPA
FREE**

Product Code : H - 281

STAINLESS STEEL



packing
in
White
Box



Capacity **750 ml.** approx.

POWER **PLUS**

Square

INSULATED STEEL BOTTLE

- Stainless Steel inside & food safe plastic outside
- Bottle has silicon strap to hold and carry easily
- Bottle Keeps liquid hot / cold for 4-6 hours



BOTTLE HAS
SILICON STRAP
TO HOLD
AND CARRY EASILY



STAINLESS STEEL inside



HOT & COLD
4-6 HOURS



**AMAZINGLY
LIGHT WEIGHT**



**STAY FRESH
NO ODOURS**



**SPILL &
LEAK PROOF**

Product Code
H 268

FOGGY+

STAINLESS STEEL

COFFEE MUG WITH CARABINER HANDLE

Capacity **350 ml.** approx.



High quality stainless steel double wall mug

Mirror finish steel inside for longer life

Double wall protects your hands from burning by hot liquids inside

Double wall also prevents cold liquids' temperature increase by body heat



LEAK PROOF



DOUBLE WALL



POWER **+** PLUS

Available in 3 Colors



Black



Yellow



Peach

Product Code : H 252

POWER PLUS

Capacity **350 ml.** approx.



FLASH Stainless Steel INSULATED COFFEE MUG

Product Code : H 255

Comes with a cap to store your drink for later

Double wall protects your hands from burning by hot liquids inside

High quality stainless steel double wall mug

Mirror finish steel inside for longer life



STAINLESS STEEL inside

CLICK HERE



TO PLAY VIDEO



KEEPS
HOT & COLD
4-6 HOURS

Capacity 375 ml, approx.



HEXA INSULATED TALL SIPPER MUG

POWER **PLUS**



ANTI
RUST



DOUBLE
WALL



LEAK
PROOF

Mug's double wall also prevents cold liquids temperature increase by body heat



BPA
FREE

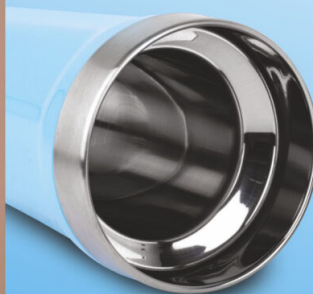


304
STEEL

Double wall protects your hands from burning by hot liquids inside



Double wall mug made of 304 grade food-safe stainless steel inside



Comes with a cap to store your drink for later

Product Code : H 254

**304 GRADE
STAINLESS STEEL** INSIDE



OMEGA VACUUM FLASK WITH PRESS LOCK CAP

POWER PLUS

- Double wall stainless steel vacuum insulation with food grade 304 stainless steel inside
- Rinse with hot/cold water before filling with hot/cold liquids for increased temperature retention
- Matte black finish body looks premium



**304
STEEL**



**LEAK
PROOF**



**DOUBLE
WALL**



Hot / Cold

**304 GRADE
STAINLESS STEEL** inside

Product Code : H 257



Press cap to pour,
press again to close

Capacity
700 ml.
approx.



POWER PLUS

PREMIA II GLASS MUG

WITH FULL SILICON SLEEVE & LID



- Elegant glass mug with silicon sleeve
- Complete Silicon sleeve on body to protect your hands from burning from hot liquid inside
- Keeps the contents pure and free from contamination



LEAK PROOF



BPA FREE



NON TOXIC



SEPARATE SLOT FOR USE WITH STRAW

Capacity: 350 ml approx.



SILICON LID



Product Code : H 256

Available in 3 Color



POWER **PLUS**

LINCOLN *Lite*

2 TONE STAINLESS STEEL MUG

Product Code : H 249



STAINLESS STEEL inside



Capacity
300 ml
approx.



Comes with a cap to store your drink for later

Double wall protects your hands from burning by hot liquids inside



DOUBLE WALL



BPA FREE



LEAK PROOF



ANTI RUST



Elegant design,
made of
100%
stainless steel inside

Enjoy your Coffee in the original Power Plus mug

LINCOLN

2 TONE MAGIC

SUCTION MUG

Capacity
300 ml approx.



Product Code : H 251

Magic suction feature
ensures spill free design



Mug doesn't fall off
with accidental pushes,
but can be lifted easily
straight up with handle

Enjoy your Coffee in the original Power Plus suction mug



STAINLESS STEEL
inside

Elegant design,
made of 100%
stainless steel inside

POWER **+** PLUS



**DOUBLE
WALL**



**BPA
FREE**



**LEAK
PROOF**



**ANTI
RUST**



MAKE IN INDIA

GRIPPER

INSULATED STEEL BOTTLE

WITH FLIP TOP LID



Capacity **750 ml.** approx.



STRAP FOR CARRYING EASILY

Product Code : H 243

- Stainless steel bottle with PU Insulated outer body
- Durable & Light Weight
- Made from high-quality Stainless steel
- Flip top lid for ease of drinking
- Electropolished inside to increase durability and to make the bottle bacteria resistant
- Makes the bottle stay fresh with no odors
- Sturdy construction



Electropolished inside to finish hiding spots of bacteria and viruses



Hot & Cold
4-6 Hours



Spill &
Leak Proof



STAINLESS STEEL inside



POWER PLUS



**AMAZINGLY
LIGHT WEIGHT**



**DURABLE
CONSTRUCTION**



**STAY FRESH
NO ODOURS**



**ERGONOMICAL DESIGN
EASY TO CARRY**

FLASH

Stainless Steel
COFFEE MUG

Product Code : H 235

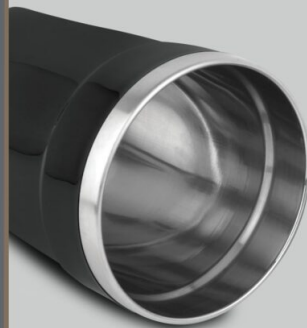


KEEP YOUR
HANDS SAFE

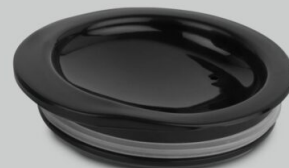


KEEP YOUR
DRINK HOT

Capacity
350 ml. approx.



POWER PLUS



**ANTI
RUST**



**DOUBLE
WALL**

High quality stainless steel
double wall mug

Mirror finish
steel inside for longer life

Double wall protects your
hands from burning by hot
liquids inside

Comes with a cap to
store your drink for later



**BPA
FREE**



**LEAK
PROOF**
CLICK HERE



TO PLAY VIDEO



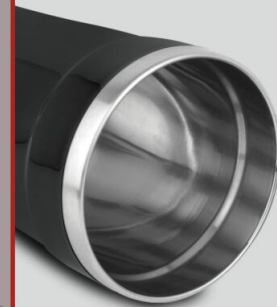
HEXA

TALL SIPPER MUG



Capacity
375 ml.
approx.

**304 GRADE
STAINLESS STEEL** inside



POWER PLUS



Double wall mug made of 304 grade food-safe stainless steel inside

Comes with a cap to store your drink for later

Double wall protects your hands from burning by hot liquids inside

Mug's double wall also prevents cold liquids' temperature increase by body heat



**ANTI
RUST**



**BPA
FREE**



**DOUBLE
WALL**



**LEAK
PROOF**



**304
STEEL**

CLICK HERE



TO PLAY VIDEO



Product Code : H 234

SHINY

SS COFFEE MUG WITH HANDLE

WITH HANDLE & INCLUDED CAP



STAINLESS STEEL inside

Capacity
225 ml.
approx.



Product Code : H 237



NOBLE

STAINLESS STEEL
COFFEE MUG

POWER **PLUS**



Product Code :
H 229



CAPACITY
460ML APPROX

- High quality stainless steel double wall mug
- Mirror finish stainless steel inside for longer life
- Double wall protects your hands from burning by hot liquids inside
- Mug's double wall also prevents cold liquids' temperature increase by body heat
- Comes with a cap to store your drink for later

STAINLESS STEEL
inside



Available in 2 colors
custom colors can be made on request



**BPA
FREE**



**LEAK
PROOF**



**ANTI
RUST**



**DOUBLE
WALL**



OXFORD

STAINLESS STEEL

COFFEE MUG

POWER **PLUS**

CAPACITY
460ML APPROX



- Double wall protects your hands from burning by hot liquids inside
- Double wall mug made of stainless steel inside
- Comes with a cap to store your drink for later



STAINLESS STEEL
inside



BPA
FREE



LEAK
PROOF



ANTI
RUST



DOUBLE
WALL

Product Code : H 228

Available in 2 colors
custom colors can be made on request





LEAK PROOF



LIGHT WEIGHT



BPA FREE LID



WIDE MOUTH

CURVY STEEL BOTTLE COLORED
Capacity 750ml. approx

CAPACITY
750ml
APPROX.



Product Code - H 233



CURVY STEEL BOTTLE NATURAL

Capacity 750ml. approx

CAPACITY
750ml
APPROX.



LEAK PROOF



LIGHT WEIGHT



BPA FREE LID



WIDE MOUTH



Product Code - H 232



Product Code
H 231



CURVY STEEL BOTTLE COLORED

Capacity 1 L. approx



LEAK PROOF



LIGHT WEIGHT



BPA FREE LID



WIDE MOUTH

CAPACITY **1L**
APPROX.





**STAINLESS
STEEL**

Product Code - H 230



CURVY STEEL BOTTLE NATURAL

Capacity 1 L. approx



LEAK PROOF



LIGHT WEIGHT



BPA FREE LID



WIDE MOUTH

**CAPACITY 1L
APPROX.**

packing
in
Brown
Box

OSCAR

STAINLESS STEEL COFFEE MUG WITH HANDLE

Product Code : H 227

POWER **PLUS**



LEAK PROOF



DOUBLE WALL



High quality stainless steel
double wall mug

Mirror finish steel inside
for longer life

Store your drink for later with
flip top drinking vent protector

Capacity **350 ml.**
approx.



Other color options

FOGGY

STAINLESS STEEL COFFEE MUG

POWER **+**

High quality stainless steel
double wall mug

Mirror finish steel inside
for longer life

Store your drink for later with
flip top drinking vent protector



LEAK PROOF



DOUBLE WALL

Capacity **350 ml.**
approx.



Product Code : H 226

Other color options

TALL SIPPER MUG



Double wall mug made of 304 grade food-safe stainless steel inside



Capacity 375 ml. approx.

Double wall protects your hands from burning by hot liquids inside

Mug's double wall also prevents cold liquids' temperature increase by body heat

**304 GRADE
STAINLESS STEEL** inside

Comes with a cap to store your drink for later with flip-top drinking vent protector



[CLICK HERE](#)



TO PLAY VIDEO



Product Code : H 223



METAL WATER BOTTLE WITH SILICON CARRY STRAP

Product code : H 192



ENGRAVING COLOUR **SILVER**

STORES ABOUT
600 ML LIQUID

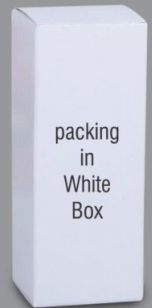
CAP AVAILABLE IN 4 COLOURS



COLORED
PLASTIC CAP
WITH SILICON STRAP



GREAT FOR
PROMOTIONS!



packing
in
White
Box



Prism Steel Bottle Colored - H 205

Capacity 1L approx



LEAK PROOF



LIGHT WEIGHT



BPA FREE LID



WIDE MOUTH

CAPACITY
1L
APPROX.

Available 2 colors

-  Copper
-  Wine Red



Cap A



Cap B



Custom color can be made on request



Straight Steel Bottle Colored Capacity 750ml. approx



LEAK PROOF



WIDE MOUTH



LIGHT WEIGHT



BPA FREE LID

CAPACITY
750ml
APPROX.



Cap A



Cap B



packing
in
Brown
Box

Available 4 colors



Custom color can be made on request

Product Code - H 203

Straight Steel Bottle Natural - H 202

Capacity 750ml. approx

STAINLESS
STEEL

CAPACITY
750ml
APPROX.



LEAK PROOF



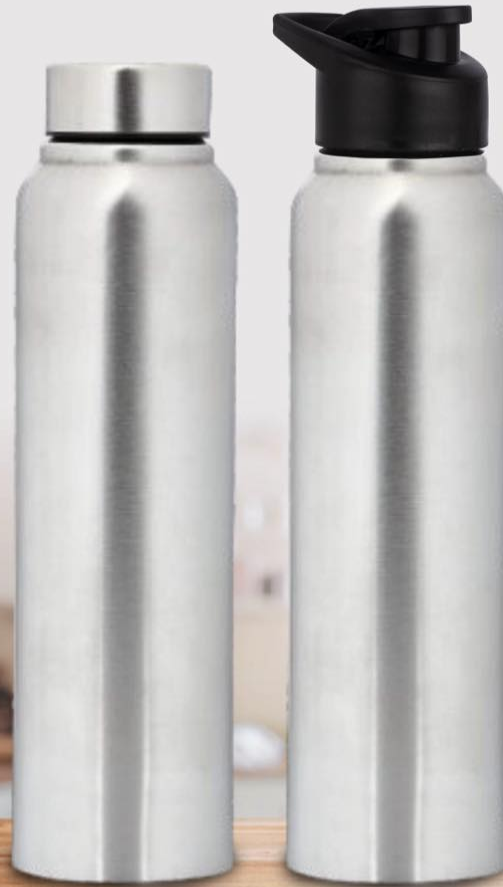
WIDE MOUTH



LIGHT WEIGHT



BPA FREE LID



Cap A

Cap B

Available
Silver Color

packing
in
Brown
Box



Straight steel bottle Colored Capacity 1L approx



Cap A



Cap B



LEAK PROOF



WIDE MOUTH



LIGHT WEIGHT



BPA FREE LID

CAPACITY **1L**
APPROX.

Product Code
H 201



Available 3 colors



Custom color can be made on request



Cap A



Cap B

CAPACITY **1L**
APPROX.



Prism steel bottle Natural - H 204

Capacity 1L approx



LEAK PROOF



LIGHT WEIGHT



BPA FREE LID



WIDE MOUTH



Cap A

Cap B



Straight Steel Bottle Natural - H 200

Capacity 1L approx



CAPACITY 1L APPROX.

-  LEAK PROOF
-  WIDE MOUTH
-  LIGHT WEIGHT
-  BPA FREE LID

Cap A

Cap B

Available Silver Color 

Eco Mug

Eco Friendly Coffee Mug with Steel Inside - H 187

WE'VE GONE **GREEN** | **BY USING ECOCUPS**

Made of Eco friendly wheat fiber



Capacity : 225 ml (approx.)



White Gift Box

- Sustainable and responsible choice as lesser plastic gets dumped in landfills
- Has a fitting cover with silicon ring around
- Outer body made of responsibly sourced wheat fiber
- BPA free, food safe material used

Eco Friendly
Coffee Mug
with Steel Inside



CLICK HERE



TO PLAY VIDEO

Capacity : 750ml (approx)



Pearl Double Cap Vacuum Bottle - H 165 with carry loop (750 ml approx)

- Fresh design stainless steel bottle in metallic finish
- Made of 304 grade food-safe stainless steel inside
- Keeps your beverage hot/cold for more than 6 hours
- Double cap design : Small cap to drink and pour, and wide mouth cap to fit ice cubes and fill the bottle easily
- Bigger lid also acts as an emergency cup while travelling

Made of 304 grade food-safe stainless steel inside



Double Cap Design



ULTIMA

Premium Revolving Kettle - H 164

In 304 Stainless Steel

POWER PLUS[®]

- Double wall vacuum technology for maximum temperature retention.
- Keeps your beverage hot or cold for upto 12 hours. (depending on usage)



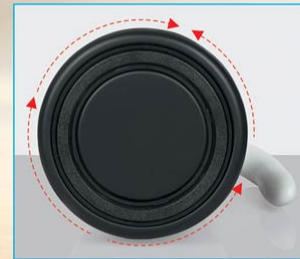
Capacity
2L



Single hand operation.
Easy push button



Easy pull up/ push down cap
locks easily and save time



Rotation function on
bottom for more seamless use



Foodsafe 304 stainless
steel used inside/outside

Wilson

Stainless Steel Flask with Carry Handle - H 161

- Keeps your beverage hot for upto 8 hours and cold upto 12 hours
- Rinse with hot/cold water before filling with hot/cold liquids for increased temperature retention
- Matte black finish body looks premium

Vacuum flask with steel cap and movable handle for carrying comfortably

Capacity: 500ml (approx)

Double wall stainless steel vacuum insulation with food grade 304 stainless steel inside

Removable middle cap for better cleaning and widen mouth





Colorful Coffee mug - H 127 (with Stainless Steel inside)

Available in 5 beautiful colors (others available on request)



Blue



Black



Amber
(Orange-Yellow)



Magenta



Ivory

Easy Pour Flask - H 110

POWER PLUS®

Easy Push Button



Features:

- Double wall stainless steel vacuum insulation technology for maximum temperature retention.
- Keeps your beverage hot or cold for upto 24 hours.
- Strong handle can easily hold the weight of whole pot of water.
- One touch stopper with soft silicone cover, easy for use.
- Galvanised press button with top notch finish.
- Food grade stainless steel cover on lid. Your beverage only comes in contact with stainless steel.

Available in 2 colors : Black and White

Double wall
stainless steel
vacuum insulation



Vacuumized Stainless Steel Sipper - H98

in Honeycomb Design

(with tea/ fruit infuser pocket)



Removable infuser pocket made of durable Eastman TRITAN™ can be used to make Green / Herbal Tea and infused, fruit flavoured water



- Double wall SS Vacuum insulation technology for maximum temperature retention
- Keeps your beverage hot or cold for more than 24 hours!
- Rubber bottom for better grip on smooth surfaces
- Premium honeycomb design in brushed steel finish adds to the luxurious feel
- Separate space for branding
- Capacity: 550ml.



Available in 2 colors:

Metallic Gray



Champagne



Branding space



[CLICK HERE](#)

Spill proof sipper
controls the flow
making it excellent for travelling



TO PLAY VIDEO



Travel Mug - H36

POWER PLUSTM

Capacity 420 ml (approx.)

FLASK FEATURES

Vacuumized

Double walled

Leak Proof

Exclusive Stainless Steel finish

The Air-tight lid prevents spillage



Keeps the Beverage warm
for **4 to 6 hrs**

Beautifully designed handle for an easy grip.

The vacuumized lid design perfectly combines
form & function



Cola Premium Vacuum Flask



- This premium flask is made of high quality 304 grade stainless steel
- Fully insulated, double walled & Vacuumized for better temperature retention
- Retains temperature for upto 16 hours!
- Cola flask, also known as cola bottle is a stylish way to carry your beverages
- Has a silicon ring around the cap for comfortable grip
- Comes with a storage pouch for carrying easily
- Beautiful design, easy on eyes
- Capacity: 750 ml (approx)



Available in 2 colors:
Wine Red & Metallic Gray



Storage pouch
for carrying easily